



Serious Business.  
 Serious Output.



 **KYOCERA**  
Document Solutions

**KM-1820**  
DOCUMENT IMAGING SOLUTION

# KM-1820

## | A Powerful Document Imaging Solution

### KM-1820 Highlights

- 18 Pages per Minute
- Standard Network Print
- Standard Color Scanning
- Scan Once Print Many, Electronic Sort
- 250 Sheet Paper Drawer, 50 Sheet MPT
- Optional Fax/Network Fax
- Optional 50 Sheet Document Processor
- Long Life Components
- Compact Design



Today's businesses need document imaging solutions that can keep up with the pace. Combining intelligent features with solid performance, the KM-1820 delivers.

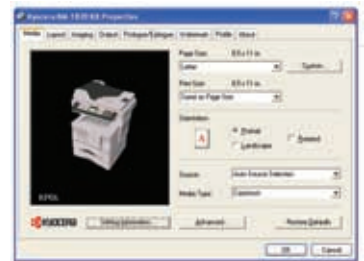
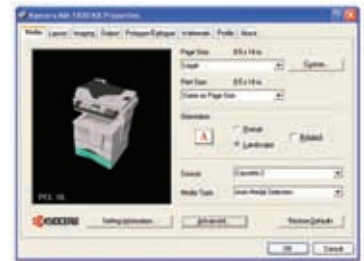


## PRINT/NETWORK

Exceptional Output and Network-wide Performance

The KM-1820 is a small footprint workhorse, producing an impressive 18 high-quality prints per minute. With a **standard controller for Printing and Scanning**, it connects quickly and seamlessly to almost any network.

The standard interface, robust printing and scanning applications, and Kyocera intelligent management solutions provide maximum document imaging abilities – all from the desktop. The advanced KX Driver, common to all Kyocera products, ensures consistency, compatibility and integration with the KM-1820 and any other Kyocera-networked device. **Comprehensive networking tools** such as the Kyocera Command Center, KM-NET Viewer and KM-NET for Clients bring added control, enabling administrators and key operators the ability to configure devices and manage output network-wide.



**UNIVERSAL PRINT DRIVER**  
The user-friendly KX Driver features a common interface and allows users and administrators complete control of the output process.

## FAX

Network Fax from the Desktop

The KM-1820 offers optional Super G3 fax capability for enhanced communication. A 33.6 Kbps modem provides a fast **3 second per page transmission speed** that rivals traditional fax machines. Connected to a network, the KM-1820 becomes a powerful Network Fax. Users can send and receive messages directly from the desktop, while taking advantage of all standard fax functions such as polling, broadcasting, and address book. For added versatility, Document Box for Fax is also available, so incoming faxes can be stored and secured, then printed when needed.

# COLOR SCANNING

Extending Document Reach When It Matters Most

The KM-1820's exceptional scanning features enable users to convert hard copy documents into electronic ones for sharing, editing or digital archiving. Documents can be scanned in color as PDFs or JPEGs, or in monochrome as PDFs or TIFFs, at sharp resolutions of up to 600 dpi. The KM-1820 is TWAIN compliant, so users can scan directly into popular imaging software, for editing or inclusion with other materials.

**Scan to E-Mail** from any SMTP-compliant environment for distributing and sharing documents to any destination. The KM-1820 is LDAP (Lightweight Directory Address Protocol) ready, so destinations can be selected from a corporate address book.

**Scan to Folder via SMB** (Server Message Block) or **Scan to FTP** expands the boundaries of the desktop MFP. Document delivery is accomplished via established network protocols, reducing the IT burden of configuration and system tool maintenance.

The KM-1820's color scan capabilities can be directed to a low-cost color laser printer, for high quality color output. This unique capability is certain to be a benefit to the cost conscious small workgroup.



## SCANNING VERSATILITY

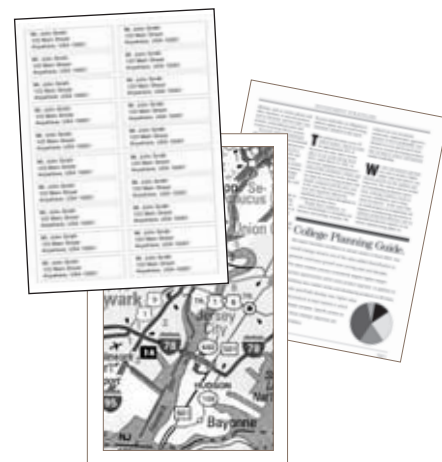
The KM-1820 offers standard scanning functionality. Pages can be scanned in Color or Monochrome, as PDF, TIFF or JPG files.

# COPY

Superior Image Quality Combines with Productivity-Enhancing Features

Six imaging modes, auto magnification/reduction, crisp image quality on a variety of print media and a maximum 550 sheet paper capacity combine with output speeds of up to 18 pages per minute to make the KM-1820 a **powerful copying tool** for the small workgroup. The device offers solid output flexibility, accommodating paper sizes from up to legal size and paper weights up to 90 lb. Index. For cost-conscious workgroups, department management can be engaged to track usage, restricting unauthorized access.

The KM-1820's standard 96MB of RAM can be upgraded to 320MB to handle complex applications. Scan Once Print Many and Electronic Sort features are standard, so productivity is always high. Combined with the optional 50 Sheet Document Processor, the KM-1820 is an excellent choice for many environments.



## OUTPUT VERSATILITY

The KM-1820 offers crisp, clear resolution on labels, legal size paper, transparencies and more.

Today's small workgroups require document imaging solutions that can offer affordability and versatility without compromising quality. The KM-1820 provides the power needed to output and deliver the business-critical documents that matter most. Backed by Kyocera, one of the most respected and recognized names in the industry, the KM-1820 is a smart choice that makes good business sense.

# KM-1820 Specifications

## BASIC SPECIFICATIONS:

Configuration:	Desktop Digital Multifunctional with Standard 250 Sheet Paper Drawer Plus 50 Sheet Multi-Purpose Tray, 96MB RAM Memory, Scan Once Print Many and Electronic Sort, Standard Network Printing and Color Send/Scanning, Optional Fax/Network Fax System, Optional 50 Sheet Document Processor and Paper Handling.
Resolution:	600 x 600 DPI/ 256 Levels; Fast 1200 Mode (1800 x 600), 2400 x 600 DPI w/ KIR
System Memory:	Standard 96MB RAM upgradeable to 320MB via 100 Pin DIMMS (1 Slot).
Magnification:	Full Size, Auto Magnification, Plus 50-200% Zoom in 1% Increments
Electrical Requirements:	120V, 60Hz, 7.8A
Dimensions:	(w/o DP) 19.5"W x 16.6"D x 15.2"H (w/ DP) 19.5"W x 16.6"D x 17.9"H
Weight:	32.0 lbs
Max Monthly Volume:	15,000 Pages per Month

## OUTPUT SPEEDS:

Warm-Up Time:	20 Seconds
First Print Out:	8 Seconds
First Copy Out:	9.5 Seconds
Pages Per Minute:	18 Letter, 15 Legal

## PAPER SUPPLY:

Standard Paper Sources:	250 Sheet Drawer, 50 Sheet MPT
Drawer Paper Size:	5.5" x 8.5" - 8.5" x 14"
MPT Paper Size:	5.5" x 8.5" - 8.5" x 14"
Std / Max Paper Capacity:	300 / 550
Paper Weight:	16-28 lb bond via Paper Drawers, 16 lb Bond -90 lb Index via MPT
Input Materials:	Bond Paper, Recycled Paper, Transparencies, Envelopes

## COPY FUNCTIONS:

Imaging Modes:	Auto, Text, Photo, Text / Photo, Manual, ECO
Continuous Copy:	Up to 999, Auto Reset to 1
Additional Features:	Auto Magnification and Paper Select, Scan Once Print Many, Electronic Sort, 2 in 1, 4 in 1, ECO Mode, 8 Job Programs, Job Reserve, Department Management, Copy Priority Function

## PAPER HANDLING OPTIONS:

### DOCUMENT PROCESSOR: DP-100

Type:	Automatic Document Feeder
Acceptable Originals:	5.5" x 8.5" - 8.5" x 14"
Capacity:	50 Sheet ADF
Speed:	18 Originals per Minute
Paper Weight:	13- 32 lb Bond
Dimensions/Weight:	17.9"W x 13"D x 3.7"H/ 5.1 lbs.

### PAPER DRAWERS: PF-17

Paper Capacity:	250 Sheets
Paper Weight:	16 - 28 lb Bond
Paper Size:	8.5" x 11" - 8.5" x 14"
Dimensions / Weight:	14.9"W x 14.7"D x 3.1"H / 4.8 lbs

## ADDITIONAL OPTIONS:

System Memory:	64, 128, 256 MB DIMM Memory
----------------	-----------------------------

## CONNECTIVITY:

### STANDARD PRINT/SCAN:

#### PRINT:

Controller:	Embedded PowerPC750/ 300 MHz Controller
Memory:	Shared RAM
Supported PDL/Emulations:	PRESCRIBE, PCL6 (PCL XL, PCL 5e), KPDL3 (PS3), Diablo 630, IBM ProPrinter X24, Epson LQ850, Line Printer
Fonts:	80 Outline Fonts for PCL XL/5e and KPDL, 1 Bitmap Font
Windows® OS Compatibility:	Windows® 98/Me/NT4.x/2000/XP/2003
Novell® OS Compatibility:	Novell NetWare® 3.x/4.x/5.x/6.x
Mac OS Compatibility:	OS 8.x/9.x/10.x
UNIX OS Compatibility:	Sun OS 4.1.x; Solaris 2.x; AIX, HP-UX (LPR)
Connectivity / Interface:	Standard 10/100BaseTX, Parallel IEEE1284, High Speed USB 2.0
Supported Protocols:	TCP/IP, IPX/SPX, AppleTalk, NetBEUI
Driver:	KX Driver for Windows®, PPD for Mac, PPD for Linux/UNIX, Certified Uni Driver
Utilities:	KM-NET Viewer, KM-NET for Clients, PDF Direct Print, Quick Setup Tool, Kyocera Command Center, PRESCRIBE Utilities
Additional Features:	E-Mail Printing, API Support

### COLOR SEND/SCAN:

Resolution:	200, 300, 400, 600 DPI
Scan Speed:	Up to 18 Sheets Per Minute (Mono) Up to 5 Sheets Per Minute (Color)
File Formats:	Mono: PDF, TIFF Color: PDF, JPEG
Connectivity:	Standard 10/100BaseTX
Supported Protocols:	TCP/IP
Scanning Features:	Scan to Folder via SMB, Scan to FTP, Scan to E-Mail, TWAIN
Driver:	TWAIN Driver, TWAIN Driver for Mac
Utilities:	Sender Address Book
Additional Features:	LDAP, 8 One Touch Destinations, Scan Color Select

### OPTIONAL FAX/NETWORK FAX: Fax System (K)

Compatibility:	G3
Transmission Speed:	Approximately 3 Seconds per Page
Modem Speed:	33.6 Kbps w/ Auto Fallback
Quick Scan Speed:	Less than 2.5 Seconds per Page
Data Compression:	MMR, MR, MH, JBIG
Fax Memory:	Standard 6MB
Fax Image Quality:	TX: Normal, Fine, Super Fine, Ultra Fine, Halftone RX: Normal, Fine, Super Fine, Ultra Fine
Driver:	KM Network Fax Driver
Utilities:	Sender Address Book
Additional Features:	Document Box for Fax, 8 One Touch Destinations, Confidential RX/TX, Broadcast, Polling, 2 in 1 Reception

